



AlgoAnalytics

OneStop.AI

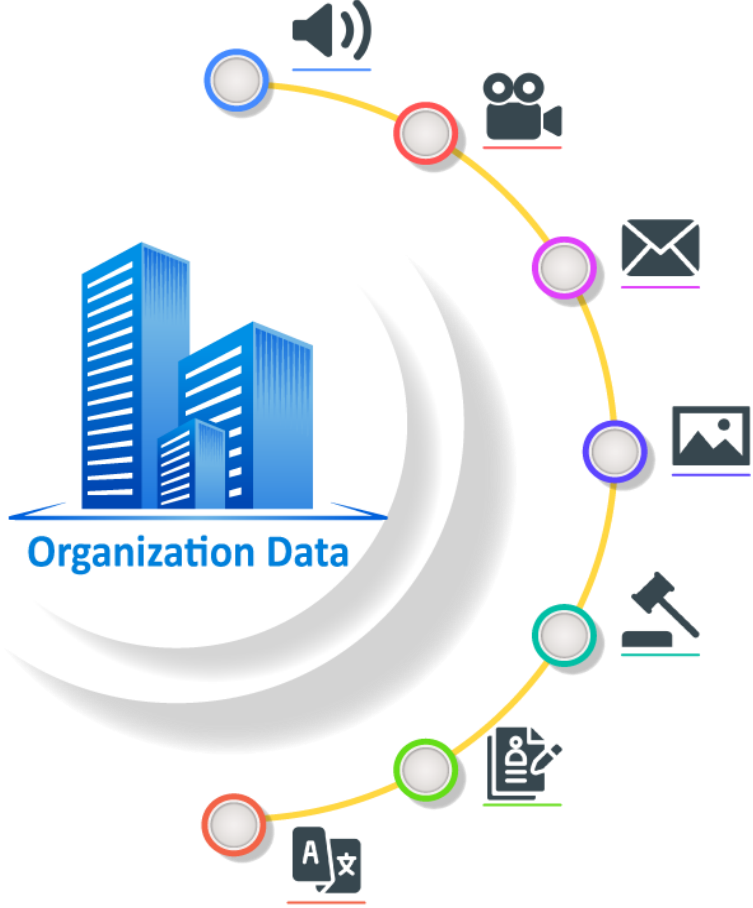
AI Partner, NTT Data Group Companies...



CONFIDENTIAL AND PROPRIETARY







Any use of this material without specific permission AlgoAnalytics is strictly prohibited

Onestop.ai



100+ Implementations across industry verticals.

Industries

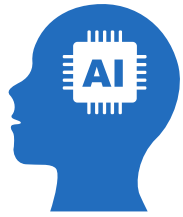
-  Manufacturing
-  BFSI
-  Retail
-  Healthcare
-  Legal
-  IT - Networking

Customizable Platforms



textsense.onestop.ai
now TEXT will make more SENSE

Portfolio of Computer Vision Use Cases



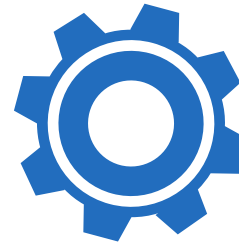
Others

- Video anomaly detection
- [Vehicle speed estimation](#)
- Mask detection
- Ophthalmology
- Object Tracking
- Quantum Computing
- Material classification and creation



Retail

- Image recognition
- Similar product recognition
- [Generating image description](#)
- [Image based recommendation system](#)
- Fashion GAN



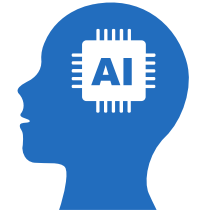
Manufacturing

- Hyperspectral Imaging
- Identification of machine movement and status
- [Identification of safety practices](#)
- [Small defect detection](#)
- Using GAN for designing city spaces with different light conditions for creation of synthetic data for autonomous driving



BFSI

- [Automated Thai number plate and booklet reading](#)
- [Automated signature detection and matching](#)
- [Automated cheque reading](#)
- [Automated car damage detection](#)
- [Financial data extraction](#)



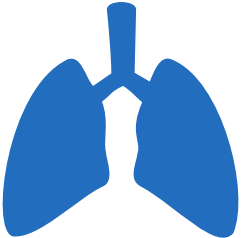
Others

- [Using GAN to create artificial image data](#)
- [Handwriting recognition](#)
- Custom clearance – 3D curl correction and signature matching
- [Video – Object detection and indexing](#)
- Reading book titles from drone images
- [Human activity tracking](#)
- [Satellite image object detection](#)

Do visit our demos!

<https://onestop.ai/>

Text Based AI for Business - TextSense



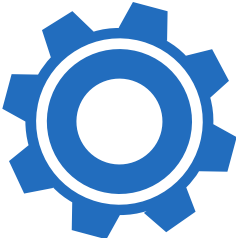
Medical Image Diagnostics

- Lab Report parsing
 - ICD Coding
- Meditern extraction
- Generating discharge summary



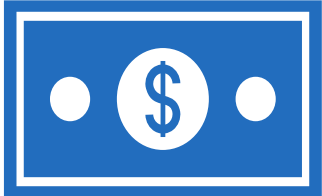
Retail

- Sentiment Analysis



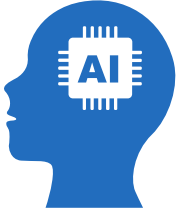
Manufacturing

- ML based question answer system



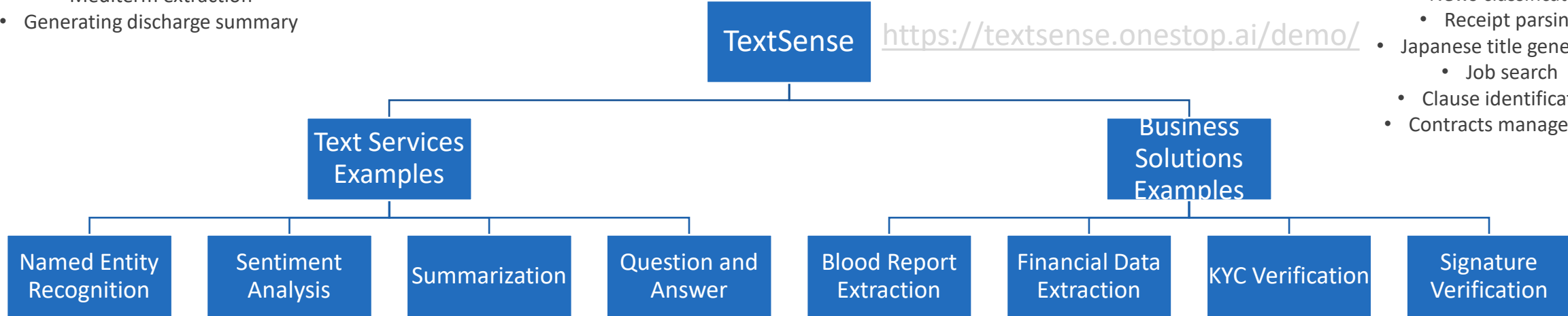
BFSI

- Sentiment Analysis

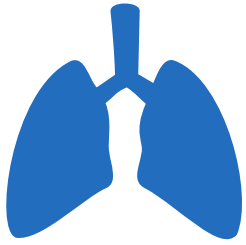


Others

- E-mail categorization
- Named entity extraction
 - News classification
 - Receipt parsing
- Japanese title generation
 - Job search
- Clause identification
- Contracts management



Structured Data Use Case



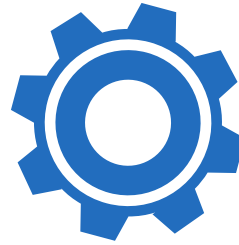
Medical Image Diagnostics

- Predicting susceptibility of disease based on genetics
- Predicting stay in hospital



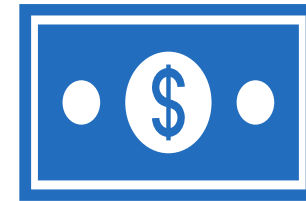
Retail

- Churn modelling
- Recommendation system
- Advertising slots optimization



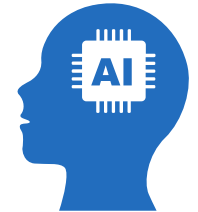
Manufacturing

- Sales forecasting
- Electricity load forecasting
 - Scrap reduction
- Predictive maintenance in ovens



BFSI

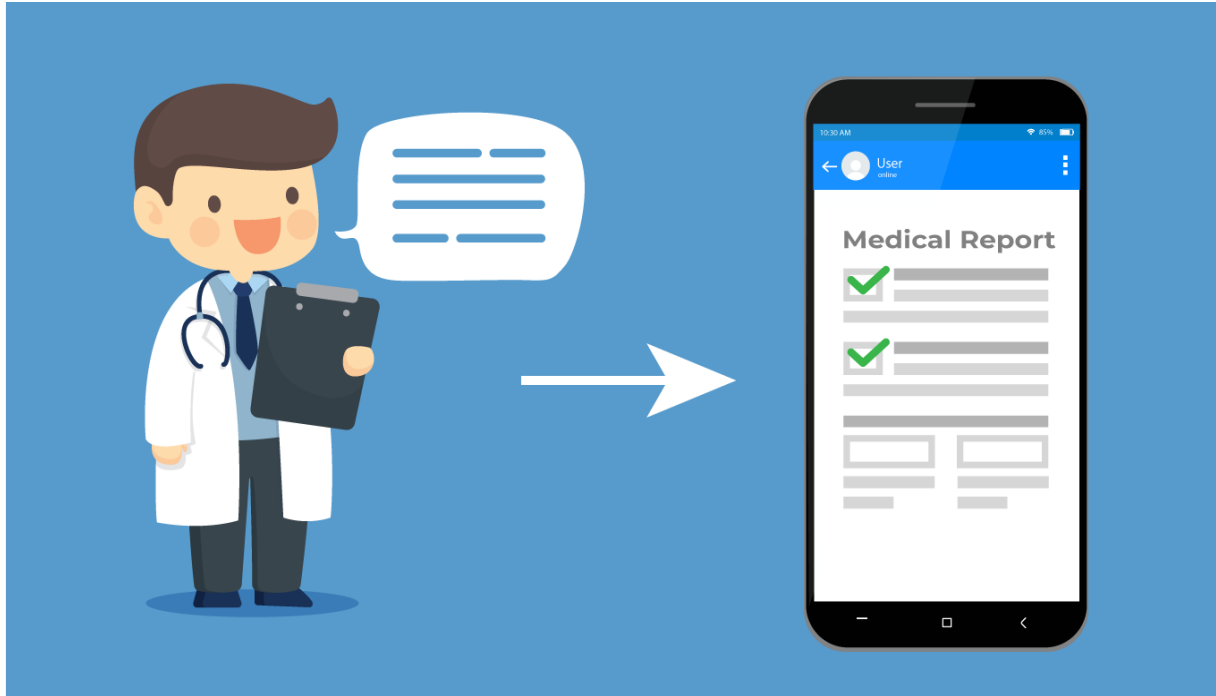
- Churn
- Recommendation system
 - Cross sell
- Default Prediction
- Fraud detection
- Portfolio optimization
- Order book prediction



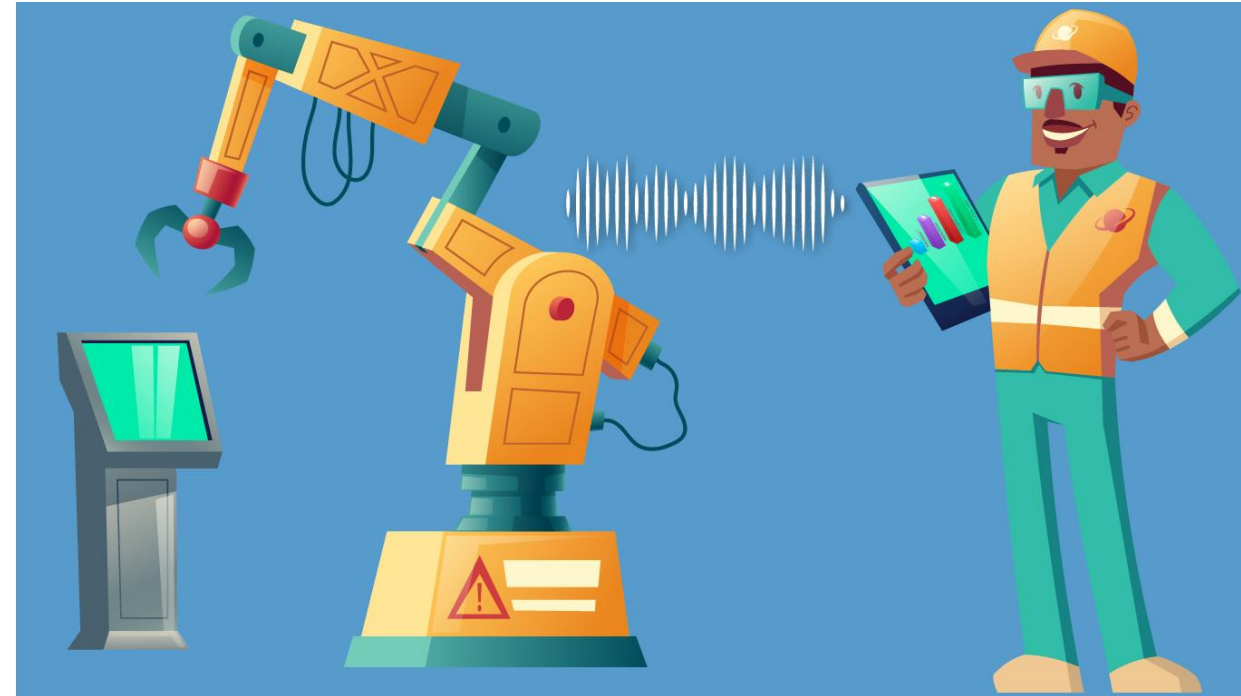
Others

- Quantum Computing

Speech and Sound Analytics Use Cases



Healthcare –
Speech to Text Prescription App

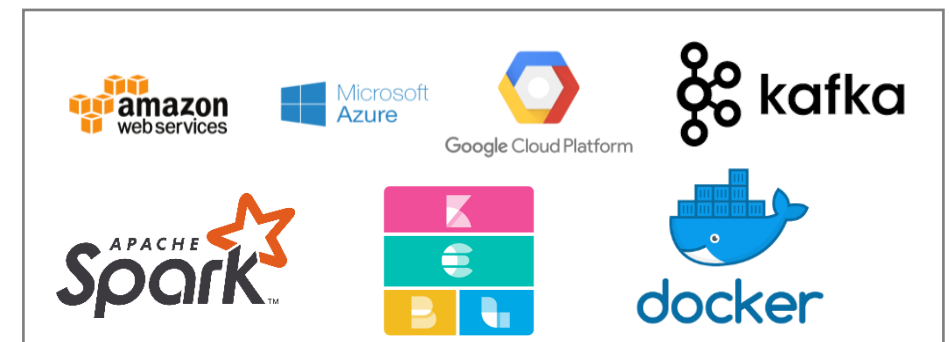
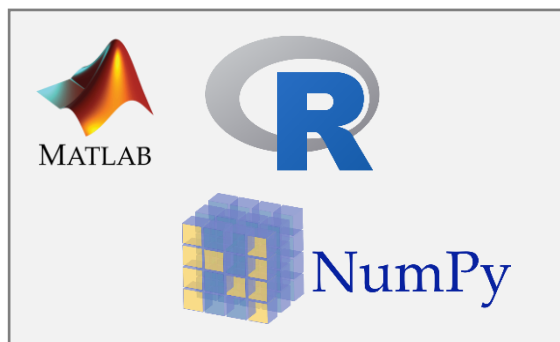
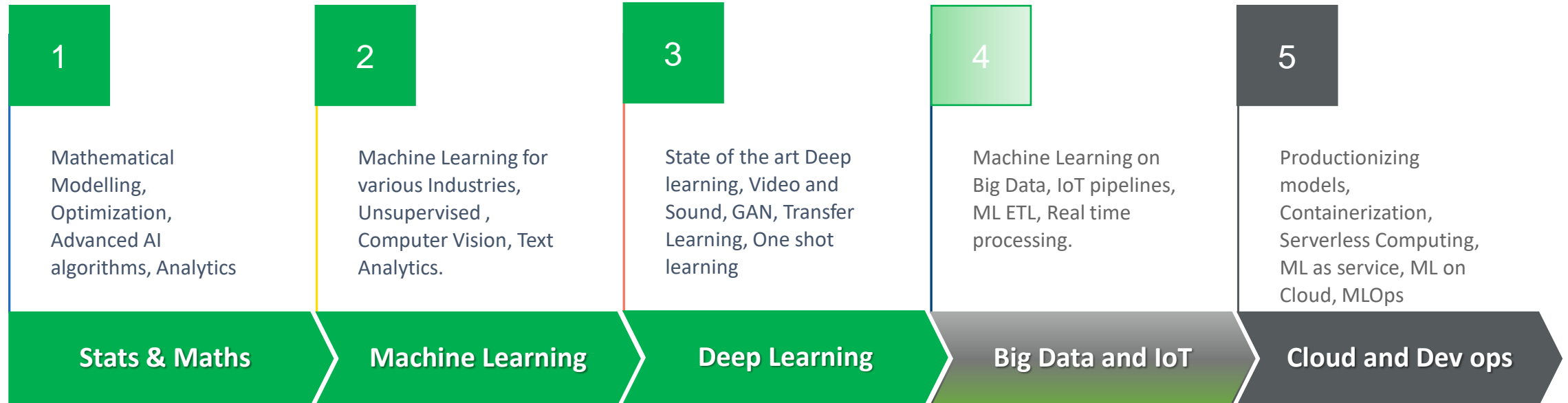


Manufacturing -
Predicting Machine Quality

Big Data And AI – Modelling to Production

Deep Expertise

Developing

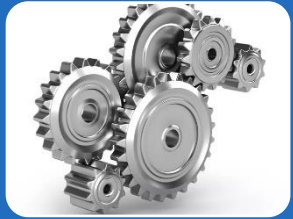


Engagement and Execution Models



Partner in the Project

- We develop AI/ML components in the system integration projects.



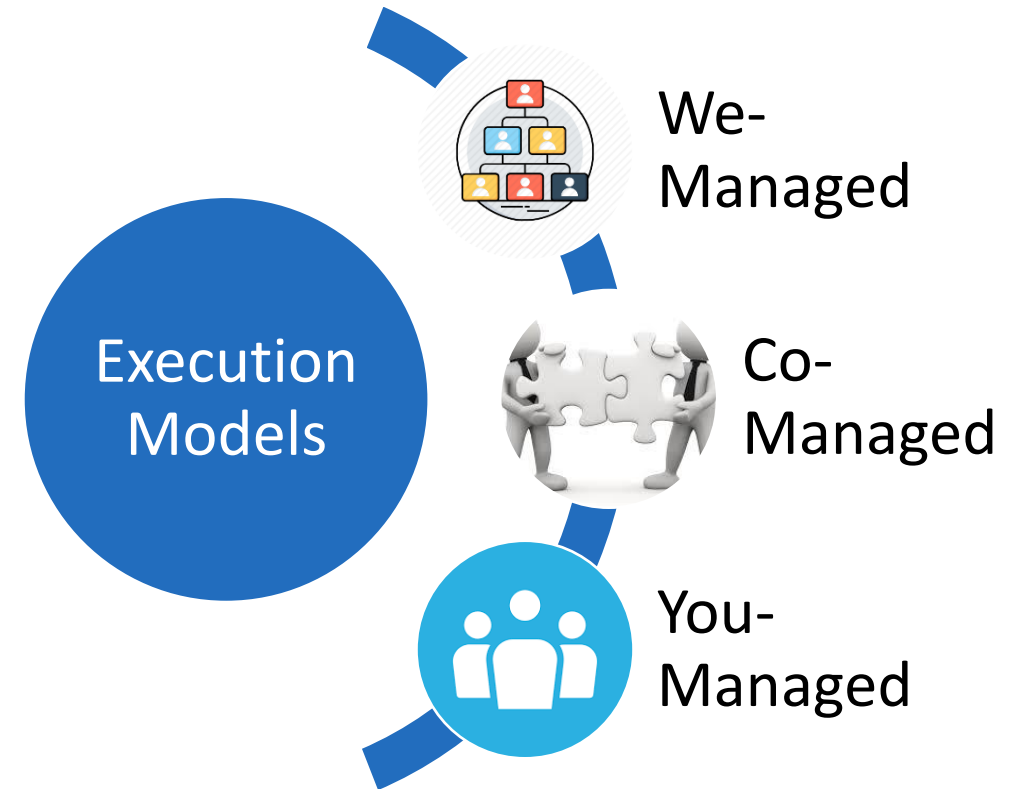
Extended arm for R&D

- We contribute in AI/ML technology exploration.



Co-creation of Solutions

- We build solutions addressing specific business needs.



Key People



CEO Aniruddha Pant, PhD, Control Systems, University of California at Berkeley, USA 2001, 20+ years of experience in Machine learning



Adwait Bhawe, CTO

BE (Mech), University of Mumbai., 20 years of software industry experience including 7+ years of machine learning experience



Prashant Rane, COO MTech IIT Kharagpur. 25+ years experience including in variety of leadership roles like head of delivery, head of technology in marquee organisations.



Anand Deshpande, Head (AI for Manufacturing)

PhD, Mechanical Engineering, University of Colorado at Boulder, USA 2001, 17+ years of experience in world-class research labs



Director. Ajit Patil MS IIT Kharagpur, Co-Founder, CEO of Vertex Software – a Japan market focused software services, exited to NTTDATA



Dr Sharda Bapat, Head (Healthcare), MD (Angeles University Foundation), LLB (Pune University)



Sayali Mahashur, VP (Projects and Marketing), CFA (ICFAI), 12+ years of core finance experience, managing projects and delivery



Kanchan Pant, Manufacturing Domain Expert MS, Marketing, USA, 15+ years of experience in business development, and running a manufacturing company



Girish Patil, CFO, Fundamental Equity Research, Quant trading



Thank You